



450 MHz Yagi Directional Antennas
DMS WIRELESS announces Yagi Antennas Available

DMS WIRELESS is your source for 450 MHz antennas: Heavy Duty Welded Yagi and Omni Directional Antennas.

Stock available for the Extreme Environment Heavy Duty Yagis: 9, 11, and 12 dBi models with 25' LMR 400 attached for units in stock. These antennas are constructed for use where wind, snow, rain, moisture and coastal areas are prevalent in the field installations. Thousands now in use for the oil and gas industry make this welded yagi the preferred choice for reliability and durability.

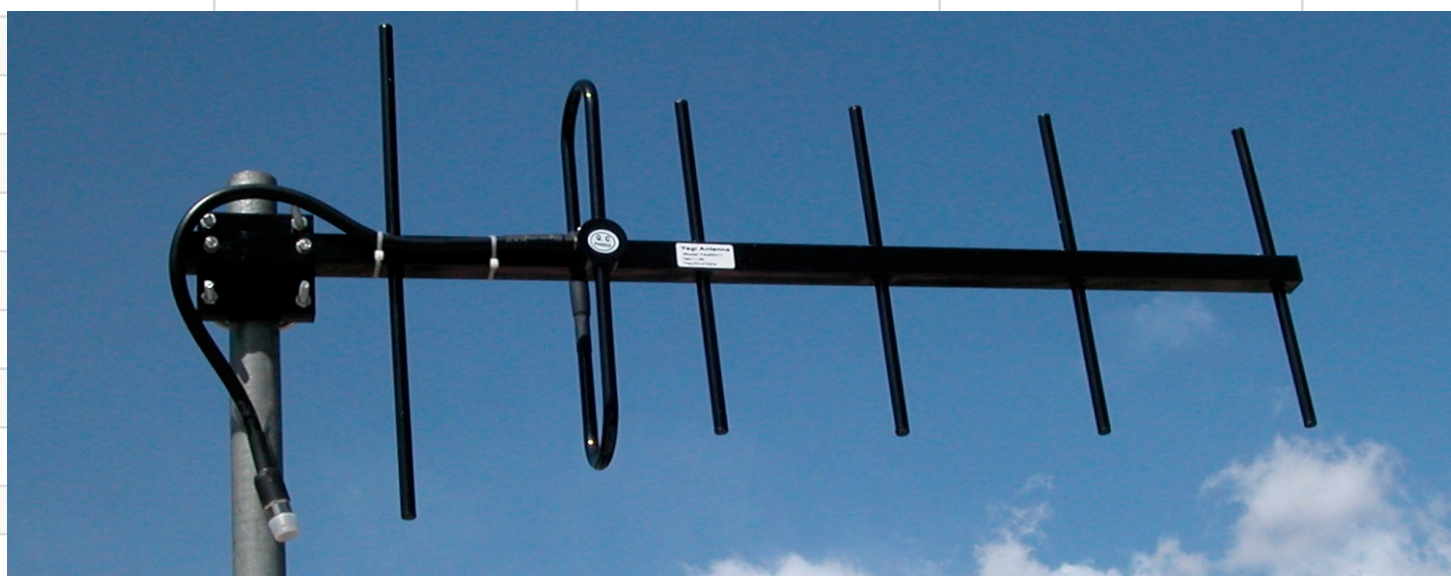
VSWR, Front to Back Ratio, Beamwidth specifications exceed industry standards. See website for detailed specifications: www.dmswireless.com

For quick and easy purchase of quality DMS antennas, please contact DMS WIRELESS:
Sales@dmswireless.com

DMS WIRELESS also supplies Sectors, Grids, Omnis, CPE Flat Panels, Yagis, Heavy Duty Yagis, Magnetic Mounts, Rubber Duck Dipoles, Patch Antennas and Universal Mounts.
Visit the Web site www.dmswireless.com

YAGI ANTENNA 450 - 470 MHz

4EE SERIES - 4 Extreme Environments	Rugged Construction for the most harsh and severe environments with true to specification RF performance
--	---



FEATURES				
Heavy Duty Stainless Steel Construction	Solid Iron Mounting Bracket	360 Degree Weld Elements to Boom	Black Polyester Powder Coat Finish	PVC Heat Shrink on Connector
Lifetime Warranty Female N Connector	Gains Available: 9, 11, 12, 14 dBi	Cable Lengths Available: 2', 15', 25'	Vertical or Horizontal Polarization	Waterproof Gamma Match
High Quality LMR400 Cable	Minimum Order Requirements	Photo representative of 450 MHz yagi		www.dmswireless.com
SPECIFICATIONS				
Part Number	YA4509W	YA45011W	YA45012W	YA45014W
Frequency Range	450 - 470 MHz	450 - 470 MHz	216 - 226 MHz	216 - 226 MHz
Gain	9 dBi	11 dBi	12 dBi	14 dBi
Front to Back Ratio	14 dB minimum	16 dB minimum	16 dB minimum	16 dB minimum
Beamwidth	80H 65V	60H 50V	55H 40V	34H 28V
VSWR	1.5:1 Typical	1.5:1 Typical	1.5:1 Typical	1.5:1 Typical
Input Impedance	50 Ohms	50 Ohms	50 Ohms	50 Ohms
Maximum Power	150 Watts	150 Watts	150 Watts	150 Watts
Connector Interface	N Type Female	N Type Female	N Type Female	N Type Female
Windload	210 kmp/130 mph	210 kmp/130 mph	210 kmp/130 mph	210 kmp/130 mph
Polarization	Vertical or Horizontal	Vertical or Horizontal	Vertical or Horizontal	Vertical or Horizontal
Lightning Protection	Direct Ground	Direct Ground	Direct Ground	Direct Ground
Structure	5 Elements	6 Elements	7 Elements	11 Elements
Mast Sizes Compatible	1.5"-2.0" 40-50 mm	1.5"-2.0" 40-50 mm	1.5"-2.0" 40-50 mm	1.5"-2.0" 40-50 mm
Double U Bolt Mounting	S/S Hardware	S/S Hardware	S/S Hardware	S/S Hardware
Standard Cable Length	2'/610 mm	2'/610 mm	2'/610 mm	2'/610 mm
15' Cable Length	YA4509W-15	YA45011W-15	YA45012W-15	YA45014W-15
25' Cable Length	YA4509W-25	YA45011W-25	YA45012W-25	YA45014W-25
				www.dmswireless.com