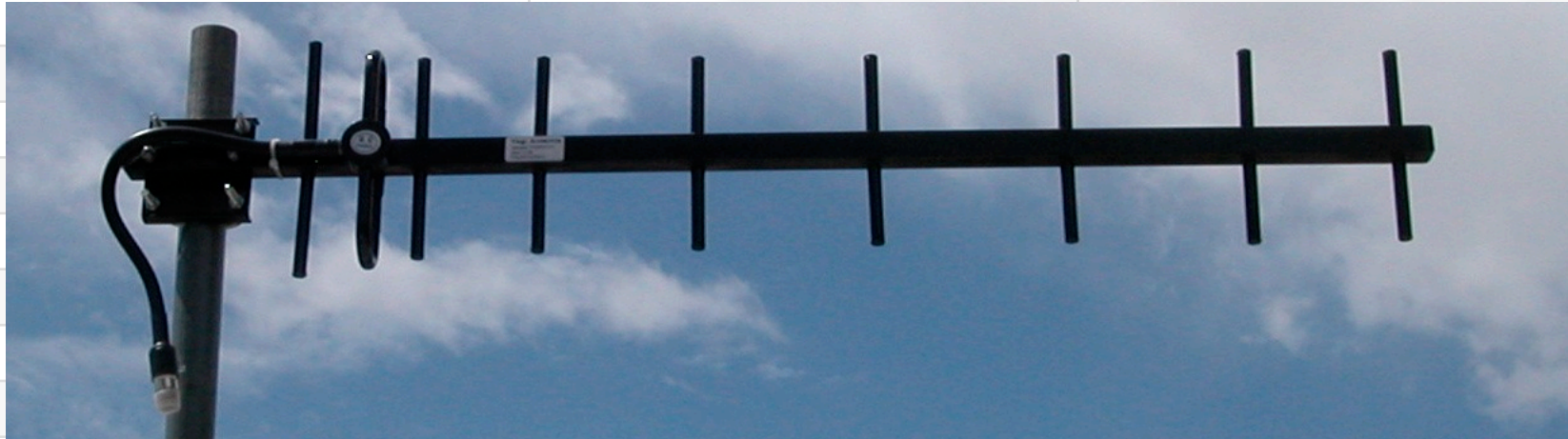


YAGI ANTENNA 868 - 870 MHz



4EE SERIES - 4 Extreme Environments

Rugged Construction for the most harsh and severe environments with true to specification RF performance



FEATURES

Heavy Duty Stainless Steel	Solid Iron Mounting Bracket	360 Degree Weld Elements to Boom
Lifetime Warranty Female N Connector	Gains Available: 9, 12, 14, 16, 17 dBi	Cable Lengths Available: 2', 15', 25'
High Quality LMR400 Cable	PVC Heat Shrink on Connector	Vertical or Horizontal Polarization
Black Polyester Powder Coat Finish	Waterproof Gamma Match	Minimum Order Requirements
	Photo 900 MHz yagi	www.dmswireless.com

SPECIFICATIONS

	YA8689W	YA86812W
Part Number	YA8689W	YA86812W
Frequency Range	868 - 870 MHz	868 - 870 MHz
Gain	9 dBi	12 dBi
Front to Back Ratio	15 dB minimum	15 dB minimum
Beamwidth	56H 41V	41H 34V
VSWR	1.5:1 Typical	1.5:1 Typical
Input Impedance	50 Ohms	50 Ohms
Maximum Power	150 Watts	150 Watts
Connector Interface	N Type Female	N Type Female
Windload	210KMH/130MPH	210KMH/130MPH
Polarization	Vertical or Horizontal	Vertical or Horizontal
Lightning Protection	Direct Ground	Direct Ground
Structure	7 Elements	9 Elements
Length	20.3"/ 515 mm	26.2"/ 665 mm
Width	6.7"/170mm	6.7"/170mm
Depth	2.3"/ 58 mm	2.3"/ 58 mm
Weight	1.54#/ 0.7 kg	1.87#/ 0.85 kg
Mast Sizes Compatible	1.5"-2.0" 40-50mm	1.5"-2.0" 40-50mm
Double U Bolt Mounting	S/S Hardware	S/S Hardware
Standard Cable Length	2'/ 610 mm	2'/ 610 mm
15' Cable Length	YA86809W-15	YA86812W-15
25' Cable Length	YA86809W-25	YA86812W-25