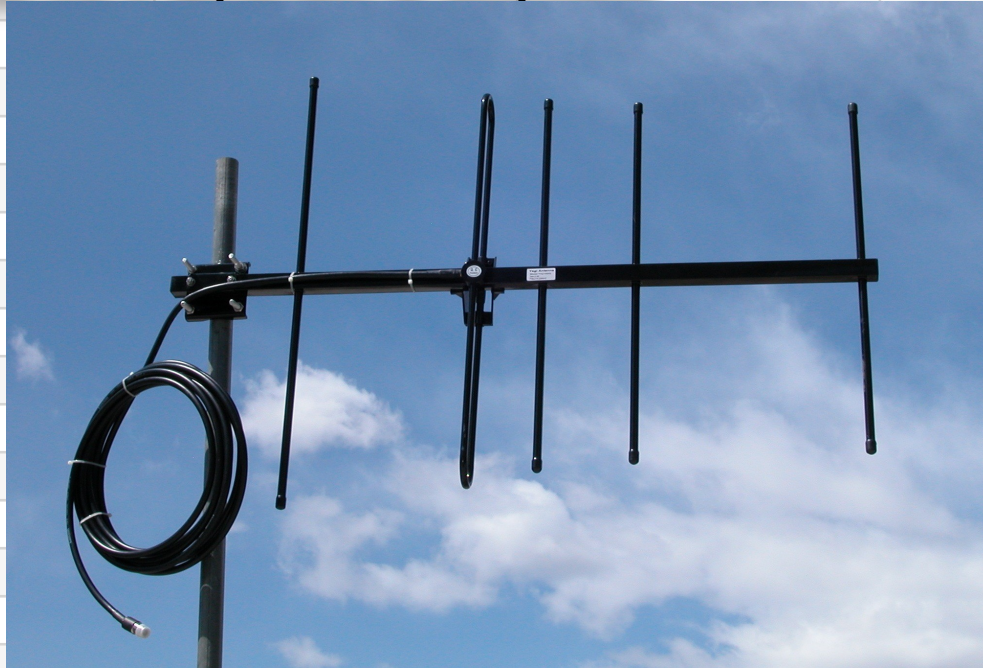


YAGI ANTENNA 216 - 226 MHz

4EE SERIES - 4 Extreme Environments

Rugged Construction for the most harsh and severe environments with true to specification RF performance



FEATURES			Photo 216 MHz Yagi
Heavy Duty Stainless Steel Construction	Solid Iron Mounting Bracket	360 Degree Weld Elements to Boom	Black Polyester Powder Coat Finish
Lifetime Warranty Male Connector	Gains Available: 6, 9, 11 dBi	Cable Lengths Available: 2', 15', 25'	Vertical or Horizontal Polarization
High Quality LMR400 Cable	Waterproof Gamma Match	PVC Heat Shrink on Connector	Minimum Order Requirements
			www.dmswireless.com
SPECIFICATIONS			
Part Number	YA21606W	YA21609W	YA21611W
Frequency Range	216 - 226 MHz	216 - 226 MHz	216 - 226 MHz
Gain	6 dBi	9 dBi	11 dBi
Front to Back Ratio	14 dB minimum	14 dB minimum	16 dB minimum
Beamwidth	100H 75V	85H 65V	60H 50V
VSWR	1.5:1 Typical	1.5:1 Typical	1.5:1 Typical
Input Impedance	50 Ohms	50 Ohms	50 Ohms
Maximum Power	150 Watts	150 Watts	150 Watts
Connector Interface	N Type Male	N Type Male	N Type Male
Windload	210KMH/130MPH	210KMH/130MPH	210KMH/130MPH
Polarization	Vertical or Horizontal	Vertical or Horizontal	Vertical or Horizontal
Lightning Protection	Direct Ground	Direct Ground	Direct Ground
Structure	3 Elements	5 Elements	7 Elements
Mast Sizes Compatible	1.5"-2.36" 40-60mm	1.5"-2.36" 40-60mm	1.5"-2.36" 40-60mm
Double U Bolt Mounting	S/S Hardware	S/S Hardware	S/S Hardware
Standard Cable Length	2'/610mm	2'/610mm	2'/610mm
15' Cable Length	YA21606W-15	YA21609W-15	YA216011W-15
25' Cable Length	YA21606W-25	YA21609W-25	YA216011W-25